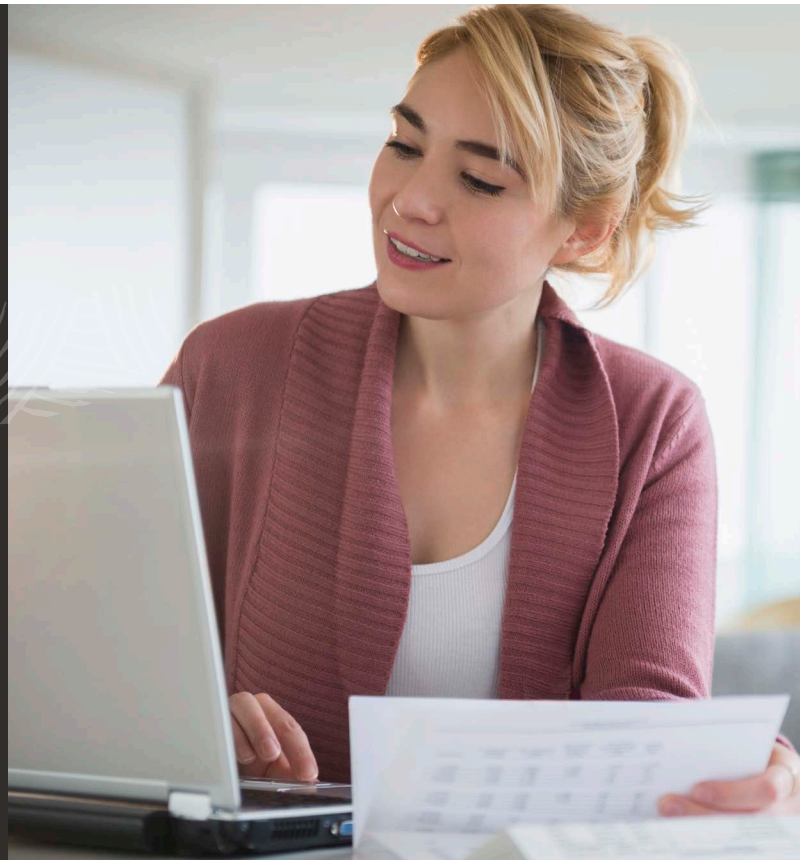




NetSuite Bank Feeds

Monitor and Manage Your Cash



Effectively managing cash is critical to the success of every business. Lack of visibility into daily balances can lead to serious financial difficulty. NetSuite Bank Feeds provides businesses access to up-to-date financial data, eliminating inefficient manual processes and providing greater control of cash resources. With it, businesses can connect to thousands of financial institutions across North America, Europe, Asia, Australia and New Zealand, and automatically import bank and credit account balances and transactions history into NetSuite.

Key Benefits

- Automate bank account management and reconciliation. Create and post transactions automatically from imported bank data.
- Up-to-date data allows financial managers to make informed decisions about how and when to allocate cash.
- Improved tracking of payments, credit card charges and bank balances helps ensure financial resources are being used for the good of the company.
- Regular reconciliation of bank and credit card transactions makes balancing the general ledger easier, saving time during the close process.

Banking Integration

Automate the import of bank and credit card data from financial institutions across North America, Europe, Asia, Australia and New Zealand, giving finance and treasury personnel a clearer view of daily cash availability.

Automated Reconciliation

Reduce the time and effort required to reconcile bank and credit statements with general ledger accounts. An intelligent rules engine compares bank data to existing transactions, automatically reconciling matching entries and flagging exceptions so they can be corrected manually.

Auto-Post Journal Entries

Bank Feeds automatically creates posting transactions from imported bank and credit card data based on user-defined criteria. Save time and minimize the risk of errors by reducing the need to manually create and post charges, refunds and deposits. It works in combination with the reconciliation process to auto-post journal entries, allowing accounting personnel to focus on managing exceptions.

Match Bank Data:

The screenshot displays the 'Match Bank Data' interface. At the top, there are navigation links: 'Reconcile Account Statement', 'Upload File', 'Reconciliation Rules', and 'Go To Register'. Below these are buttons for 'Submit', 'Update Imported Bank Data', and 'Run Reconciliation Rules'. A form section contains fields for 'ACCOUNT *' (Bank of America (GBP)), 'CURRENCY' (GBP), 'SUBSIDIARY' (Parent Company), 'BANK BALANCE' (2021.11), and 'BALANCE AS OF' (1/4/2021). The interface is divided into two main sections: 'Imported Bank Data' and 'Account Transactions'. The 'Imported Bank Data' section shows a table with 5 entries, including a credit of 100.00 and several debits. The 'Account Transactions' section shows a table with 4 entries, all bill payments. At the bottom, there are buttons for 'Match', 'Exclude', 'New Journal Entry', 'New Charge', 'New Deposit', and 'Cash Application'. A 'Match Difference' of 0.00 is displayed on the right. A checkbox for 'Make Auto-Create Rule From Selected Transactions' is also present.

DATE	TYPE	TRAN NO.	NAME	MEMO	AMOUNT
1/4/2021	Credit		Sample payer	Sample GBP for transaction on 2021-01-04. Sa...	100.00
1/4/2021	Debit		CO-OP OLD STREET LONDON		-10.04
1/4/2021	Debit		CARD PAYMENT TO JOHN LEWIS 9.09 GBP, RAT...		-9.09
1/4/2021	Debit		AMAZON WEB SERVICES AWS.AMAZON.COM		-10.48
1/4/2021	Debit		04 JAN 21 BOOTS 773 LONDON GBR GBR		-0.14

DATE	TYPE	TRAN NO.	NAME	MEMO	AMOUNT
1/4/2021	Bill Payment		Global Aquatic Inc.		-100.00
1/4/2021	Bill Payment		Load Testing Vendor 0001	ACCT500100	-200.00
1/4/2021	Bill Payment		MAC		-15.00
1/4/2021	Bill Payment		Travel & Tours Agency		-50.00